

TALAN | UAE | SAFETY SHOES

SOLES
BY



CORDURA®
Advanced Fabrics

 **BASF**


WINCH



www.talansafetyshoes.com



**ABRASION RESISTANCE OF
HT-PET ACCORDING TO LABORATORY TESTS**

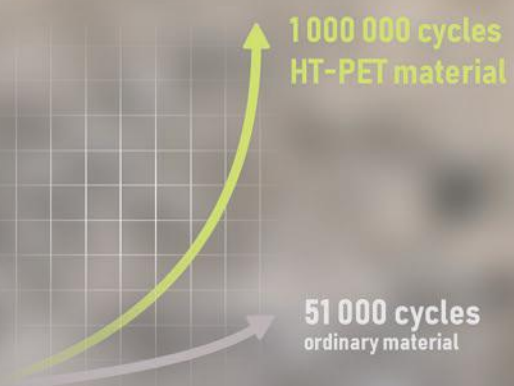
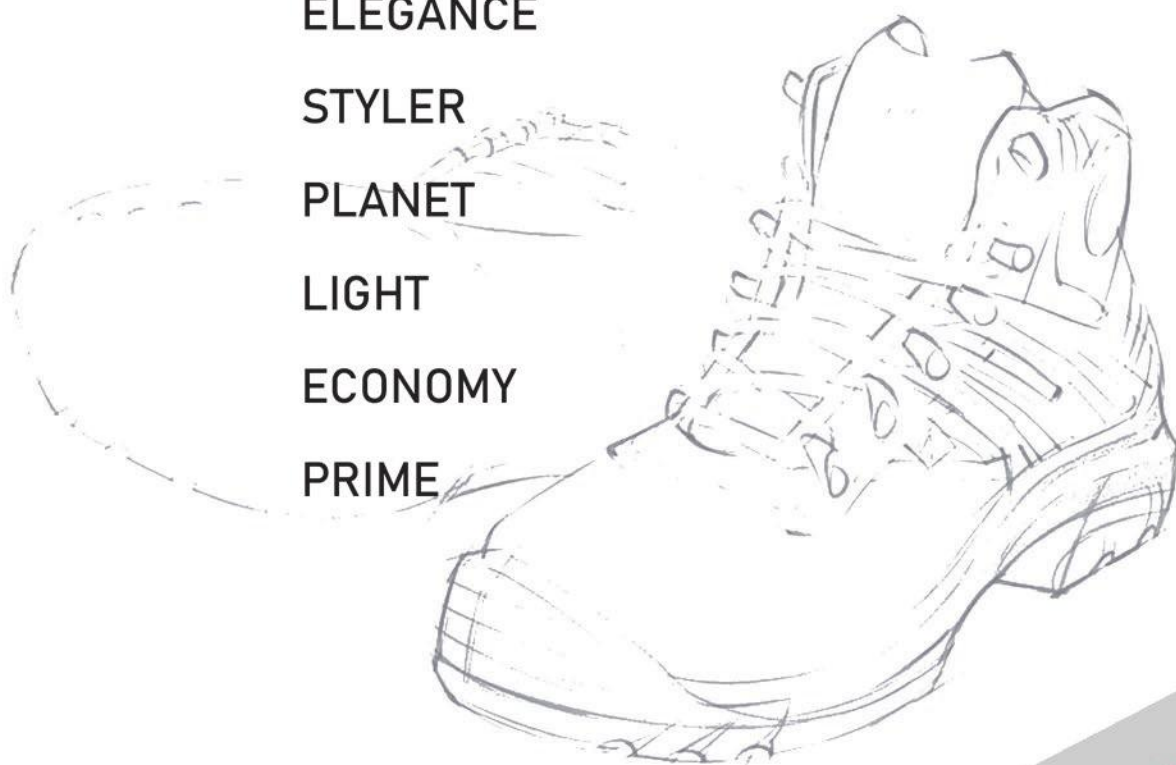


TABLE OF CONTENTS:

ABOUT US	4
QUALITY PROOF	5
TECHOLOGIES AND MATERIALS	6-7
LIGHT DUTY	8
HEAVY DUTY	9-10
AIRFLEX PRO, JACQUARD	11
AIRFLEX BREATH	12-13
AIRFLEX	14
ANTISTATIC	15
MOON	16
TORNADO	17
WALKER	18
OUTDOOR	19
ELEGANCE	20-21
STYLER	22
PLANET	23
LIGHT	24
ECONOMY	25-27
PRIME	28-29



ABOUT US

Verona Shoes FZE is a part of global TALAN Group.

Nowadays, TALAN Group has achieved the production volume of around 3 Mln pairs of safety shoes annually. There are two footwear factories, seven sales houses through all over the world, two certified laboratories and the successful story since 1923.

Found in 2011, Verona Shoes FZE has got already the reputation as decent partner among many different countries.

We offer our partners a wide range of safety shoes with accredited quality in protection classes OB, S1, S1P, S2 and S3, particularly kind of ankle boots and low shoes. The reliability of our technologies has been approved by many years of experience.

OUR VISION

Every worker must be protected with high-quality safety shoes.

OUR MISSION

We want to protect the workers in the whole world with safety shoes of decent quality like we have done since 1923. High safety, ergonomic features and comfort combined with appealing design for reasonable price is our production philosophy. Personal protection should be accessible to everyone – as your safety is of highest priority for us.

OUR CORE VALUES

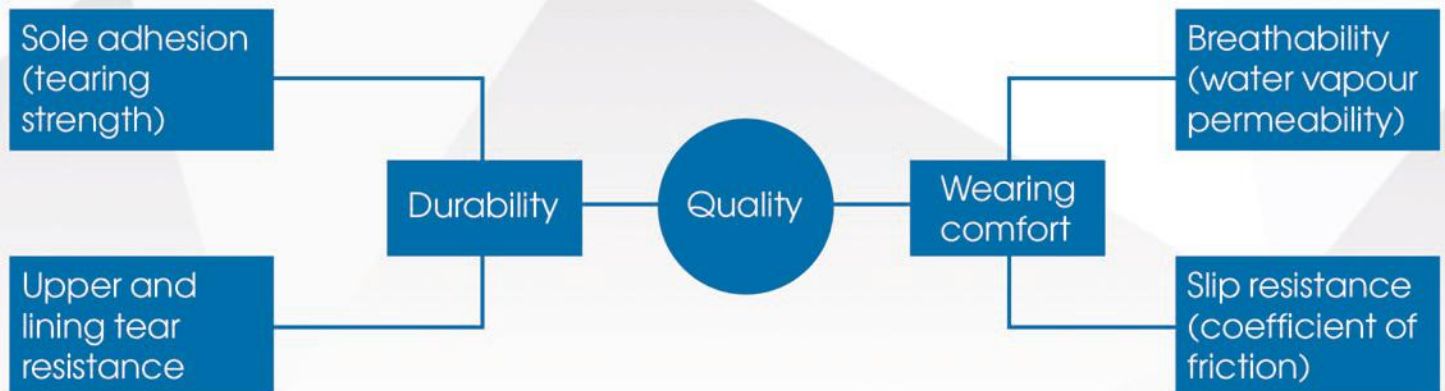
- Mutual respect with our partners
- Trust worth relationship
- Sincerity in dealing
- Responsibility in all areas
- Flexibility
- Social responsibility

QUALITY PROOF

Being professional always means to know what a high quality safety shoes are. We tried to determine the main measurable aspects of how we understand quality.



CIMAC



TALAN Group had started the testing the safety shoes under own TALAN logo at TÜV Rheinland®Laboratory Germany from 2012 onwards. It proves the quality of products as per EU norms. The last update of TALAN safety shoes certification shows the significant quality predominance of TALAN safety shoes compared to norms among few of most important testing parameters.

DURABILITY

Sole adhesion up to 1.75 times above standard requirements

Upper tear resistance for Economy series shoes up to 2.7 times above standard requirements

Lining tear resistance up to 5.6 times above standard requirements

COMFORT

Sole slip resistance up to 2.3 times above standard requirements

Upper water vapour permeability up to 3 times (Economy series) – up to 8.6 times (Premium series) above standard requirements

Lining water vapour permeability up to 30 times above standard requirements

TECHNOLOGIES AND MATERIALS: **SAFETY**



Nickelfree steel toe cap and midsole

Usually, the end users rarely take care about which kind of metal the midsole or the toe cap was made from. Yet, the contact with skin could cause allergic reactions. Moreover, the nickel free steel toecaps and midsoles are lighter than ones made of nickel-coated steel. So the double advantages are obvious.



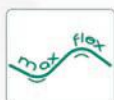
fiberCap

The main advantage of new generation of toe caps made from composite material is definitely light weight. Furthermore, the fiberCap is stainless and thermo neutral, so end user's feet feels comfortable both during low& high temperatures.



aluComfort

Another alternative to steel toe caps are aluminium toe caps. Being as light as toe caps made from composite materials, they offer one more advantage. The aluComfort caps that are used in our shoes are only 2 mm thick – so the foot fits better without any compromises in safety.



maxFlex

Your safety combined with comfort is our main goal. The maxFlex midsole is a perfect example of such combination – ensuring full safety due to kevlar material it is extremely flexible and breathable. Check it yourself!



BASF Sole

All our shoes have two layers of sole – the inner PU one and the outsole. During production of shoe we use polyurethane of famous German chemicals manufacturer BASF®. For that reason the inner layer is durable but soft enough to ensure appropriate weight distribution during work. In such a way your feet in TALAN shoes will not only feel much less exhausted during workload, but also your joints will be healthier.



PU outsole

Our PU outsoles from BASF materials are light and flexible, yet with high durability, perform well in aggressive work conditions, such as chemical or oil environment, and have remarkable slip resistance – up to 2.3 times higher than required by european standards.



TPU outsole

An upgraded version of regular PU-PU sole offers better slip-proofness as well as significantly higher tear resistance (up to 40% higher than required by european standards) – and in that way much longer lifetime.

TECHNOLOGIES AND MATERIALS: **COMFORT**



Leather

We know exactly what is most important for manufacturing of durable and comfortable protective shoes, it is leather. For this reason we pay a lot of attention to leather materials, and the best witness of it is the fact that Talan is the only manufacturer of safety shoes who has its own office in India with only one purpose - to check the quality of leather we use.



strongProtection

strongProtection is not only just 2 mm thick leather. We are sure that it not only corresponds to all the standards but even shows higher performance - as approved by TÜV Rheinland independent laboratory, this kind of leather has up to 2.7 times higher tear resistance and up to 3 times better breathability than required by EN:ISO 20345 standard.



CrazyHorse

Everyone who has something to do with leather knows that CrazyHorse is the sort of highest quality. World known brands of wallets, reticule and other accessories use CrazyHorse leather in their production. Still, except its attractive look and long wear life it also has astonishing breathability - up to 8.6 times higher than required by EN:ISO standards! We use best materials in our shoes - and CrazyHorse leather is one of them.



Cordura

Cordura® lining material is a poly-amid-fiber with special thread structure. During production of Cordura® cut poly-amide fibers are double spun by each other and then woven. This gives the fabric four times higher tearing strength than by a simple nylon. Moreover, Cordura® is water repellent, highly breathable and



PU coating

Every shoe protection class was developed for special purposes. For example, S1P protection class should protect your toes from impact as well as your leg from penetration from below and is not supposed to be water-repellent. But if you work under such conditions - e.g. in a warehouse - you suppose the shoe to have high breathability. Due to special abrasive-resistant PU coating that naturally preserve the form of shoe our designers was able to use very gentle and highly breathable lining. Breathable and durable solution for uppers - perfect for S1P shoes!



airSurf Fabric

The quality of lining is very important for safety shoes because it is in contact with the feet of the worker wearing it at least for 8 hours a day. It has to be not only wear resistant but also highly breathable. That's why airSurf Fabric has up to 5.6 times better tear resistance and up to 30 times higher breathability than required by EN:ISO standards, what is proofed by testing protocols of TÜV Rheinland laboratory.



Teklife

TEKLIFE is a development of Italian manufacturer Siretessile® who specializes on production of technical textiles for shoes industry. The TEK LIFE®-fabric is not only highly soft and has great moisture absorbing characteristics. Moreover, it prevents also the plaque formation in the shoes, it makes shoes protected from unpleasant smell. Combined with high abrasion resistance that all makes TEK LIFE® lining the best choice for protective shoes.



staBene

Comfort wearing is one of most important factors for a safety shoes. Knowing that we used the last from Italian manufacturer well known in shoes industry - and we are sure your feet will feel it!



Heat resistant outsole
+300°C



**COMPLETELY
METAL-FREE**



- Completely **metal-free**
- Extremely breathable **CrazyHorse** upper
- **Cordura®** textile collar and tongue
- **MaxFlex** kevlar midsole
- **fiberCap** for less weight with perfect protection
- ESD, oil-resistant, slipresistant, heat resistant
- **PU-Ruber outsole by Michelin®**
- **staBene** last for more comfort



LIGHT DUTY 829



WATER RESISTANT
full shoes



Heat resistant outsole
+300°C



- Extremely breathable **CrazyHorse** upper
- **Cordura®** textile collar and tongue
- **WINCH® Fit quick lacing System** guarantees maximum durability, reliability and strength
- **Membrane ePTFE**, water-repellent, breathable
- **ESD MaxFlex** kevlar midsole
- **fiberCap** for less weight with perfect protection
- Antistatic, oil-resistant, slipresistant, heat resistant
- **PU-Ruber outsole by Michelin®**
- **staBene** last for more comfort
- **Support Protection Stability Control**
- **Reflective inserts**



HEAVY DUTY
7302



WATER RESISTANT
full shoes



Heat resistant outsole
+300°C



- Extremely breathable **CrazyHorse** upper
- **Cordura®** textile collar and tongue
- **WINCH® Fit quick lacing System** guarantees maximum durability, reliability and strength
- **Membrane ePTFE**, water-repellent, breathable
- **ESD MaxFlex** kevlar midsole
- **fiberCap** for less weight with perfect protection
- Antistatic, oil-resistant, slipresistant, heat resistant
- **PU-Ruber outsole by Michelin®**
- **staBene** last for more comfort
- **Support Protection Stability Control**
- **Reflective inserts**



HEAVY DUTY
7335





Heat resistant outsole
+300°C



**COMpletely
METAL-FREE**



- Completely **metal-free**
- Extremely breathable **CrazyHorse** upper
- Breatheble lining material
- **MaxFlex** kevlar midsole
- **fiberCap** for less weight with perfect protection
- ESD, oil-resistant, slipresistant, heat resistant
- **PU-Rubber outsole by Michelin®**
- **staBene** last for more comfort
- **Support Protection Stability Control**

HEAVY DUTY 7376





Half pair weight
only around
484 g



WATER RESISTANT
full shoes



Heat resistant outsole
+300°C



**COMPLETELY
METAL-FREE**



LINE
S3

AIRFLEX PRO

- Completely **metal-free**
- Special upper breathable fabric from complex untextured polyester threads, **Power Bumper Spider Black** in the toe and back part
- **WINCH® Fit quick lacing System** guarantees maximum durability, reliability and strength.
- **Microfiber, Cordura®** textile tongue
- **Membrane ePTFE**, water-repellent, breathable
- Removable **Shock Absortion** insole with silicone insert in heel
- **ESD MaxFlex** kevlar midsole
- **fiberCap** for less weight with perfect protection
- Antistatic, oil-resistant, slipresistant, heat resistant **PU-Ruber outsole by Michelin®**, with **Flex-zones**
- Shock Absortion **AirBag System**
- **staBene** last for more comfort



Half pair weight
only around
477 g



**FLEXIBLE
OUTSOLE
AND UPPER**



**20 TIMES
BETTER**
Water-vapour
permeability



**COMPLETELY
METAL-FREE**

LINE
S1P

JACQUARD

- Completely **metal-free**
- Lightweight and breathable **fabric** upper material
- Breathable **mesh** lining
- Removable antistatic anatomically-shaped insole
- Light and flexible **maxFlex** kevlar midsole
- **fiberCap** for less weight with perfect protection
- Antistatic, oil-resistant, slip-proof **PU-PU sole from BASF®**
- **staBene** last for more comfort





Half pair weight
only around
625 g



**2,5 TIMES
BETTER**
Upper water-vapour
permeability



**LIGHT AND
FLEXIBLE
SHOES**



**COMPLETELY
METAL-FREE**

LINE
S3



- Completely **metal-free**
- Waterproof breathable **microfiber** upper
- **Cordura®** textile collar and tongue
- Breathable **Mesh** lining
- Light and flexible **maxFlex** kevlar midsole
- Removable antistatic anatomically-shaped insole
- Plastic toe cap
- Antistatic, oil-resistant, slip-proof **PU-PU sole from BASF®**
- **Grip control:** flex-zones to facilitate movement
small triangles for controls the foot position on a slippery or uneven surface
- staBene last for more comfort
- **Reflective inserts**

BREATH 800



BREATH 826



Half pair weight
**only around
585 g**



**2,5 TIMES
BETTER**
Upper water-vapour
permeability



**LIGHT AND
FLEXIBLE
SHOES**



**COMPLETELY
METAL-FREE**

LINE
S1P

- Completely **metal-free**
- Waterproof breathable **microfiber** upper
- **Cordura®** textile collar and tongue
- Breathable **Mesh** lining
- Light and flexible **maxFlex** kevlar midsole
- Removable antistatic anatomically-shaped insole
- Plastic toe cap
- Antistatic, oil-resistant, slip-proof **PU-PU sole from BASF®**
- **Grip control:** flex-zones to facilitate movement
small triangles for controls the foot position on a slippery or uneven surface
- staBene last for more comfort
- **Reflective inserts**

BREATH 825





Half pair weight
only around
492 g



1 MILLION
abrasion
resistance
Upper material HT PET



FLEX-ZONES
for easy
movement



COMPLETELY
METAL-FREE



LINE
S3

- Completely **metal-free**
- Upper fabric **HT PET** with nylon thread, **microfiber**
- **Cordura®** textile tongue
- **Spig Tex** and **Mesh** combined lining
- Removable insole with **Shock Absortion** properties
- Kevlar antistatic **MaxFlex ESD** midsole
- **fiberCap** for less weight with perfect protection
- Antistatic, oil-resistant, slipresistant **PU-TPU Grip control** sole from **BASF®**, with **Flex-zones**.
- Shock Absortion **AirBag System**
- **staBene** last for more comfort
- Reflective insterts



AIRFLEX



Half pair weight
only around
492 g



1 MILLION
abrasion
resistance
Upper material HT PET



FLEX-ZONES
for easy
movement



COMPLETELY
METAL-FREE



LINE
S3

- Completely **metal-free**
- Upper fabric **HT PET** with nylon thread, **microfiber**
- **Cordura®** textile tongue
- **Spig Tex** and **Mesh** combined lining
- Removable insole with **Shock Absortion** properties
- Kevlar antistatic **MaxFlex ESD** midsole
- **fiberCap** for less weight with perfect protection
- Antistatic, oil-resistant, slipresistant **PU-TPU Grip control** sole from **BASF®**, with **Flex-zones**.
- Shock Absortion **AirBag System**
- **staBene** last for more comfort
- Reflective insterts



AIRFLEX BOOTS



Half pair weight
only around
532 g



**LIGHT AND
FLEXIBLE
SHOES**



**BREATHABLE
MATERIAL**
full shoe



**COMPLETELY
METAL-FREE**



LINE
S3

- Completely **metal-free**
- Waterproof breathable **microfiber** upper
- Abrasion resistance on the overcap
- Breathable Mesh lining
- Removable antistatic anatomically-shaped insole
- **fiberCap** for less weight with perfect protection
- Light and flexible **maxFlex** kevlar midsole
- **Reflective inserts**
- Antistatic, oil-resistant, slip-proof
PU-PU sole from BASF®
- **staBene** last for more comfort



ANTISTATIC



Half pair weight
**only around
530 g**



**2,5 TIMES
BETTER**
Upper water-vapour
permeability



**LIGHT AND
FLEXIBLE
SHOES**



**COMPLETELY
METAL-FREE**

LINE
S2

- Completely **metal-free**
- Waterproof breathable **microfiber** upper
- Breathable **Mesh** lining
- Removable antistatic anatomically-shaped insole
- **fiberCap** for less weight with perfect protection
- Antistatic, oil-resistant, slip-proof **PU-PU sole from BASF®**
- **staBene** last for more comfort

MOON ORION





Half pair weight
only around
563 g



**1,65 TIMES
BETTER**
Energy absorption



**1,5 TIMES
BETTER SRC**
slip resistance



**2,13 TIMES
BETTER**
Tear strength of leather

- Completely **metal-free**
- **StrongProtection** leather upper
- Wearproof breathable synthetic lining material
- Removable antistatic anatomically-shaped insole
- **fiberCap** for less weight with perfect protection
- Light and flexible **maxFlex** kevlar midsole
- Antistatic, oil-resistant, slip-proof **PU-PU sole from BASF®**
- Reflective inserts on the outer side
- **staBene** last for more comfort

LINE
S3



**COMPLETELY
METAL-FREE**

TORNADO 171



TORNADO 133





**ABRASION
RESISTANCE
OF UPPER**



UPPER | LINING
14 TIMES BETTER | **23 TIMES BETTER**
Water-vapour permeability



**1,88 TIMES
BETTER SRC**
slip resistance



**1,7 TIMES
BETTER**
Tear strength of leather

- Completely **metal-free**
- Washable in the washing machine*
- Upper **PU-coating** for more protection
- **Cordura®** textile upper, collar and tongue
- Extremely breathable **airSurf Fabric** lining
- Removable antistatic anatomically-shaped insole
- **fiberCap** for less weight with perfect protection
- Light and flexible **maxFlex** kevlar midsole
- Antistatic, oil-resistant, slip-proof **PU-PU sole** made from **BASF®**
- Completely metal-free
- **staBene** last for more comfort

* up to 6 times



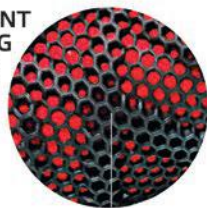
WALKER 170

LINE
S1P



**COMPLETELY
METAL-FREE**

ABRASIVE-RESISTANT
SELF-CLEANING
PU-COATING



WEARPROOF
BREATHABLE
CORDURA®
MATERIAL

AIRSURF FABRIC LINING
WITH UP TO 30 TIMES
HIGHER BREATHABILITY
THAN REQUIRED BY
EUROPEAN STANDARDS

SUEDE BLACK
LEATHER ON
THE OVERCAP

STAINLESS AND
THERMO NEUTRAL
FIBERCAP FOR LESS
WEIGHT WITH
PERFECT
PROTECTION



ITALIAN STABENE
LAST FOR MORE
COMFORT

ANTISTATIC OIL-RESISTANT
SLIP-PROOF PU-PU
SOLE FROM BASF®

LIGHT AND FLEXIBLE
MAXFLEX
KEVLAR
MIDSOLE

REMOVABLE
ANTISTATIC
ANATOMICALLY-
SHAPED INSOLE



**8,63 TIMES
BETTER**

Upper water-vapour
permeability



**1,8 TIMES
BETTER**

Tear strength of leather



IMPACT RESISTANCE | COMPRESSION
**1,57 TIMES
BETTER** | **1,57 TIMES
BETTER**



Half pair weight
**only around
609 g**

**OUTDOOR
368**

**OUTDOOR
318**



- Italian design
- Extremely breathable **CrazyHorse** upper
- **Cordura®** textile collar and tongue
- Extremely breathable **airSurf Fabric** lining
- Removable antistatic anatomically-shaped insole
- **aluComfort** cap for better ergonomomy
- Light and flexible **maxFlex** kevlar midsole
- Antistatic oil-resistant slip-proof **PU-PU sole** made from **BASF®**
- Reflective inserts on the sides
- **staBene** last for more comfort

LINE
S3





**2,34 TIMES
BETTER**

Tear strength of leather



UPPER | LINING

**3,25 TIMES
BETTER** | **67 TIMES
BETTER**

Water-vapour permeability



IMPACT RESISTANCE | COMPRESSION

**1,4 TIMES
BETTER** | **1,7 TIMES
BETTER**



**1,37 TIMES
BETTER SRC**

slip resistance

- Natural leather **Crazy Horse**, black
- Breathable **Mesh**, nonwoven vamp lining material 300 Gsm
- **aluComfort** cap for better ergonomics
- Light and flexible **maxFlex** kevlar midsole
- Dual-density polyurethane **PU-PU sole from BASF®**, antistatic, oil and slip resistant
- **staBene** last for more comfort

LINE
S3

ELEGANCE 331





**2,34 TIMES
BETTER**

Tear strength of leather



UPPER | LINING
3,25 TIMES BETTER | **67 TIMES BETTER**

Water-vapour permeability



IMPACT RESISTANCE | COMPRESSION
1,4 TIMES BETTER | **1,7 TIMES BETTER**



**1,37 TIMES
BETTER SRC**
slip resistance

- Natural leather **Crazy Horse**, black
- Breathable **Mesh**, nonwoven vamp lining material 300 Gsm
- **aluComfort** cap for better ergonomics
- Light and flexible **maxFlex** kevlar midsole
- Dual-density polyurethane **PU-PU sole from BASF®**, antistatic, oil and slip resistant
- **staBene** last for more comfort

LINE
S3

ELEGANCE 360





UPPER | LINING
8,63 TIMES BETTER | **12,6 TIMES BETTER**
 Water-vapour permeability



IMPACT RESISTANCE | COMPRESSION
1,33 TIMES BETTER | **1,5 TIMES BETTER**



2,36 TIMES BETTER
 water absorption



1,88 TIMES BETTER SRC
 slip resistance

- Extremely breathable **CrazyHorse** leather upper
- **Cordura®** textile collar and tongue
- Extremely breathable **airSurf Fabric** lining
- Removable antistatic anatomically-shaped insole
- **fiberCap** for less weight with perfect protection
- Light and flexible **maxFlex** kevlar midsole
- Antistatic, oil-resistant, slip-proof **PU-PU sole** made from **BASF®**
- Reflective inserts in heel region
- **staBene** last for more comfort



LINE
S3

STYLER 111





IMPACT RESISTANCE | COMPRESSION
1,4 TIMES BETTER | **1,53 TIMES BETTER**



1,33 TIMES BETTER SRC
 slip resistance



3 TIMES BETTER
 Tear strength of leather



UPPER | LINING
3,75 TIMES BETTER | **33,2 TIMES BETTER**
 Water-vapour permeability

- Completely **metal-free**
- Extremely breathable **CrazyHorse** leather upper
- **Cordura®** textile collar and tongue
- Extremely breathable **airSurf Fabric** lining
- Removable antistatic anatomically-shaped insole
- **fiberCap** for less weight with perfect protection
- Light and flexible **maxFlex** kevlar midsole
- Antistatic, oil-resistant, slip-proof **PU-PU sole from BASF®**
- Reflective inserts on the sides
- **staBene** last for more comfort

LINE
S3



COMPLETELY METAL-FREE

PLANET 217





Half pair weight
**only around
520 g**



**2,5 TIMES
BETTER**
Upper water-vapour
permeability



**LIGHT AND
FLEXIBLE
SHOES**



**COMPLETELY
METAL-FREE**

LINE
S3

LIGHT 6319



- Completely **metal-free**
- Waterproof breathable **leather** upper
- Breathable **Mesh** lining
- **ESD MaxFlex** kevlar midsole
- Removable antistatic anatomically-shaped insole
- **fiberCap** for less weight with perfect protection
- Antistatic, oil-resistant, slip-proof **PU-PU sole from BASF®**
- **staBene** last for more comfort

LIGHT 2277





UPPER | LINING
3,65 TIMES BETTER **30 TIMES BETTER**
 Water-vapour permeability



1,88 TIMES BETTER SRC
 slip resistance

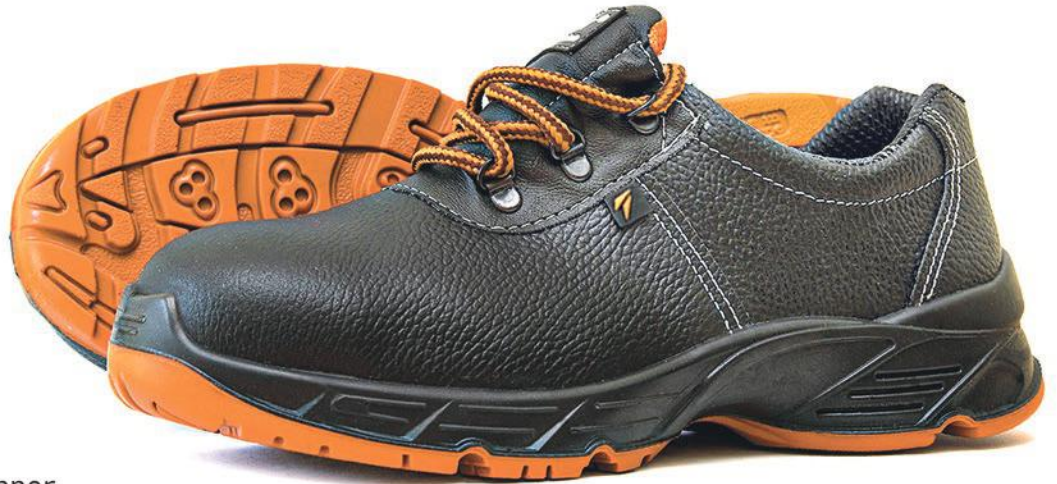


2,63 TIMES BETTER
 Tear strength of leather



2,35 TIMES BETTER
 water absorption

LINE
S3



- **StrongProtection** leather upper
- Wearproof breathable synthetic material lining
- Removable antistatic anatomically-shaped insole
- **Nickel-free** steel toe cap
- Midsole of **nickel-free** steel
- Antistatic, oil-resistant, slip-proof **PU-PU** sole made from **BASF®**
- **staBene** last for more comfort

COMFORT 162

S1P **S3**

FORWARD 112





UPPER | LINING
3,65 TIMES BETTER **30 TIMES BETTER**
 Water-vapour permeability



1,88 TIMES BETTER SRC
 slip resistance



2,63 TIMES BETTER
 Tear strength of leather

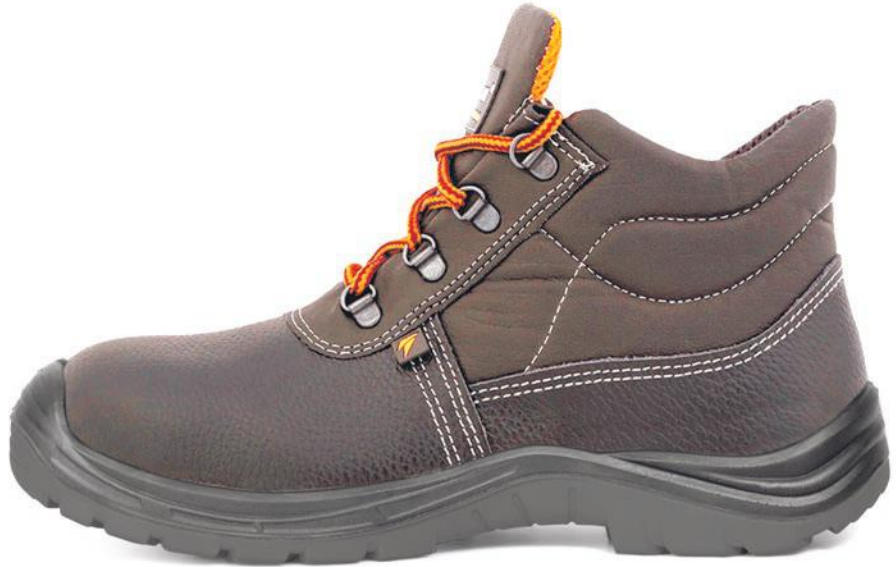


2,35 TIMES BETTER
 water absorption



Heat resistant outsole
+300°C

FORWARD 512



S3

- **StrongProtection** leather upper
- Wearproof breathable upper
- Removable antistatic anatomically-shaped insole
- **Metal** toe cap
- Midsole of **nickel-free** steel
- Antistatic, oil-resistant, slip-proof **PU-Rubber sole made from BASF®**
- **staBene** last for more comfort

STYLER 582





UPPER | LINING
3,65 TIMES BETTER | **30 TIMES BETTER**
 Water-vapour permeability



1,88 TIMES BETTER SRC
 slip resistance



2,63 TIMES BETTER
 Tear strength of leather



2,35 TIMES BETTER
 water absorption

- **StrongProtection** leather upper
- Wearproof breathable synthetic material lining
- Removable antistatic anatomically-shaped insole
- **Nickel-free** steel toe cap
- **Nickel-free** steel midsole
- Antistatic, oil-resistant, slip-proof **PU-PU sole** made from **BASF®**
- **staBene** last for more comfort

LINE
S1P

LINE
S3

STYLER 182





UPPER | LINING
3,65 TIMES BETTER | **30 TIMES BETTER**
Water-vapour permeability



1,88 TIMES BETTER SRC
slip resistance



2,63 TIMES BETTER
Tear strength of leather



2,35 TIMES BETTER
water absorption

- **StrongProtection** leather upper
- Wearproof breathable synthetic material lining
- Removable antistatic anatomically-shaped insole
- **fiberCap** for less weight with perfect protection
- **Steel midsole, antistatic insole**
- Antistatic, oil-resistant, slip-proof **PU-PU sole made from BASF®**
- **staBene** last for more comfort

LINE
S3



PRIME 545

PRIME 575





UPPER | LINING
3,65 TIMES BETTER | **30 TIMES BETTER**
Water-vapour permeability



1,88 TIMES BETTER SRC
slip resistance



2,63 TIMES BETTER
Tear strength of leather



2,35 TIMES BETTER
water absorption

LINE
S1P

- **Protective** leather upper
- Wearproof breathable synthetic material lining
- Removable anatomically-shaped insole
- **Metal** toe cap
- **Steel** midsole
- Oil-resistant, slip-proof **PU-PU** sole made from **BASF®**
- **staBene** last for more comfort

PRIME 5362



PRIME 6312









NEXT GENERATION FOOTWEAR
INDUSTRY LLC SOLE PROPRIETORSHIP



120914 SHARJAH, AL SAJAA INDUSTRIAL, BEHAIND EMIRATES
STREET, PLOT NO. 6830, SHED NO 1+2+3+4 UAE



+97165274090



fax: 065369964



manager@talansafetyshoes.com
talan@talansafetyshoes.com
veronashoesfze@gmail.com



www.talansafetyshoes.com



www.talansafetyshoes.com

